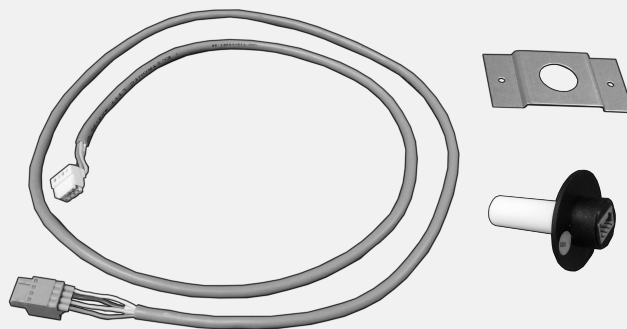




Air for life

Installation regulations

Humidity sensor (RH-sensor)
English

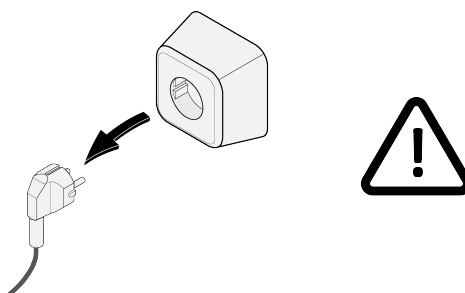


1 Mounting humidity sensor (RH sensor)

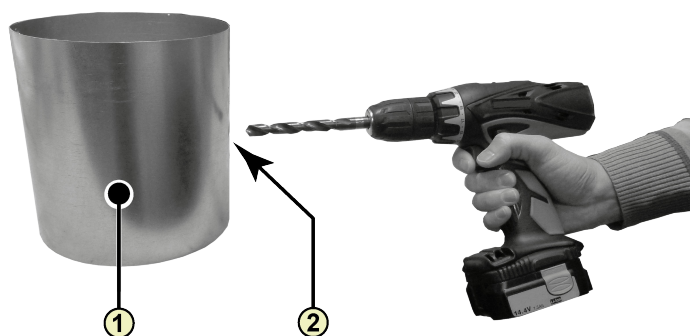


Installation of a humidity sensor (RH sensor) is possible on all Brink heat recovery appliances, with the Renovent Excellent appliance only from software version S1.05.

1

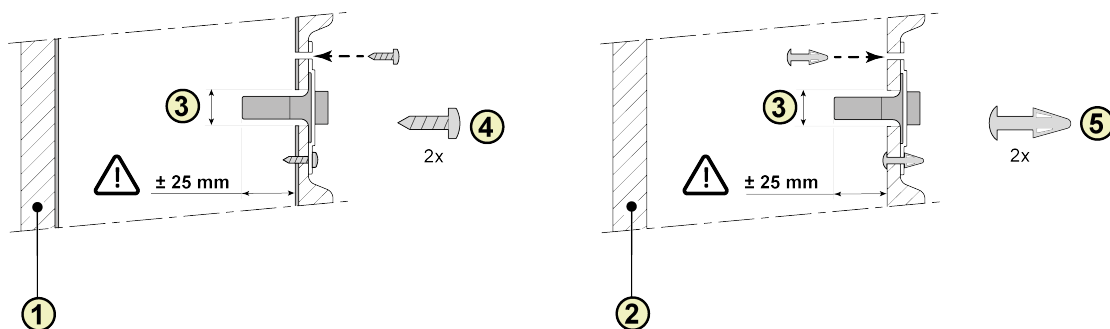


2



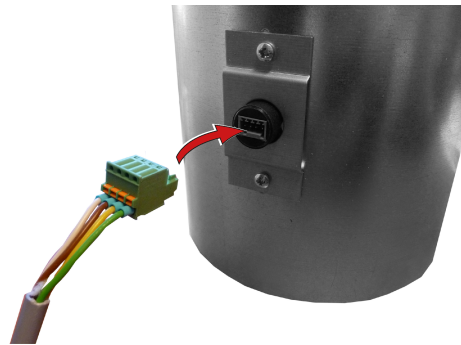
1. Duct from dwelling
2. Drilling hole; minimum $\varnothing 18$ mm - maximum $\varnothing 25$ mm

3

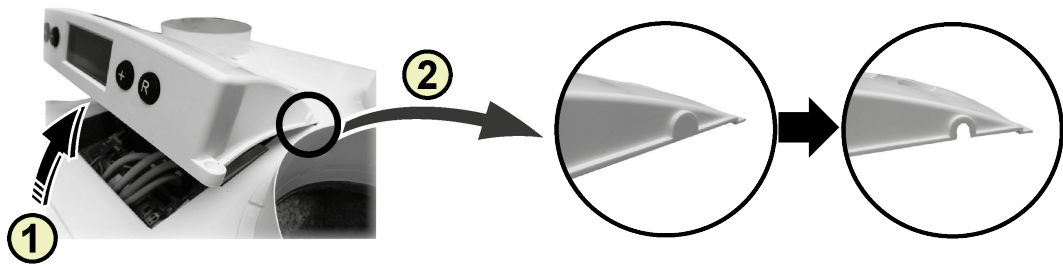


1. Isolated metal duct
2. EPE duct
3. Humidity sensor (RH sensor)
4. Screw pozidrive 3,5 x 19
5. PCB spacer

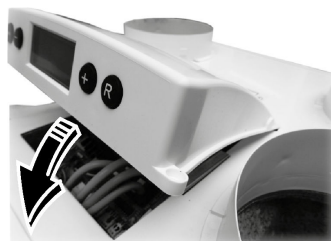
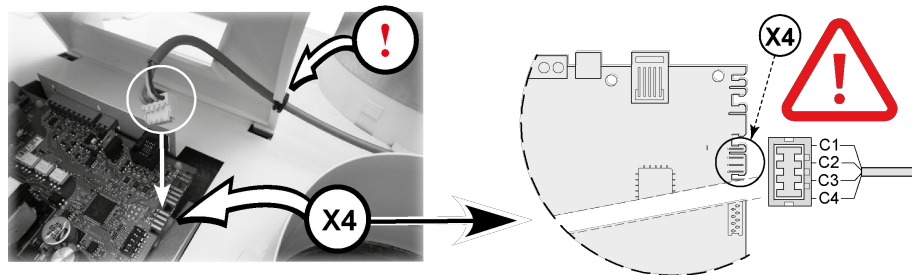
4



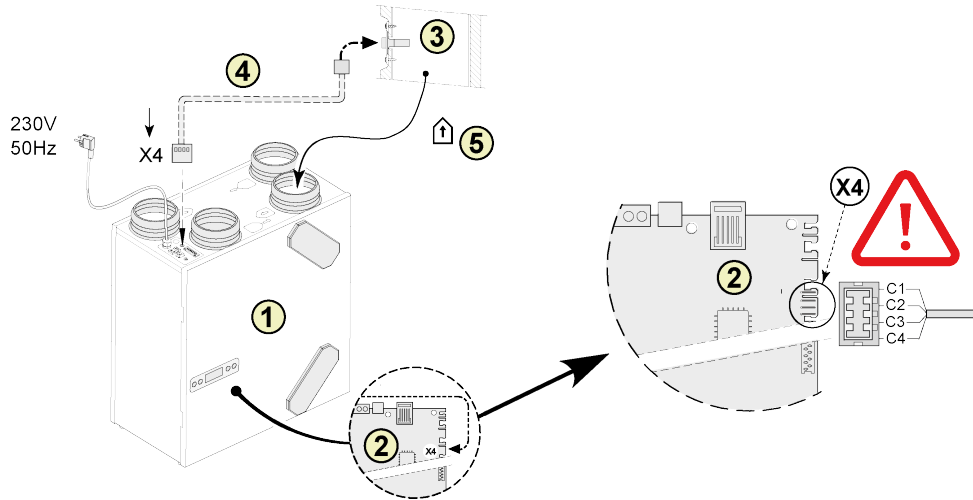
5A Renovent Excellent 300/400



- 1. Remove cover
- 2. Remove breakout



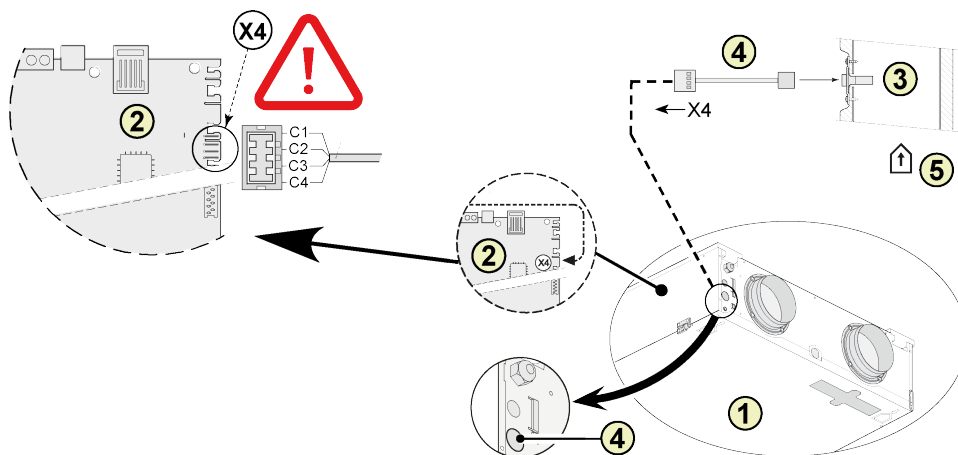
5B Renovent Excellent 180



1. Renovent 180 Excellent appliance
2. Control board
3. Humidity sensor [RH sensor]
4. Cable comes with humidity sensor. Cut out an opening in the available grommet for feeding through the sensor cable.
5. Duct "Extract air"

*C1 = Brown
C2 = White
C3 = Green
C4 = Yellow*

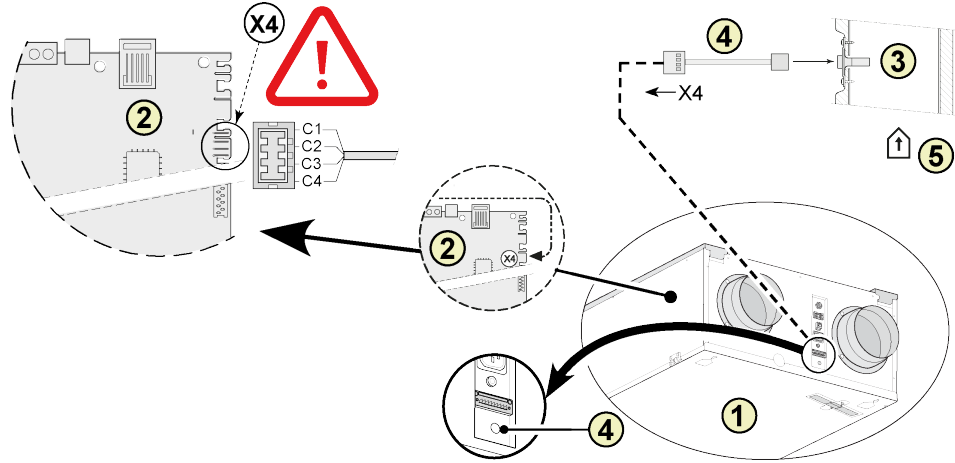
5C Renovent Sky 150



1. Sky 150 appliance
2. Control board
3. Humidity sensor [RH sensor]
4. Cable comes with humidity sensor. Cut out an opening in the available grommet for feeding through the sensor cable.
5. Duct "Extract air"

*C1 = Brown C2 = White
C3 = Green
C4 = Yellow*

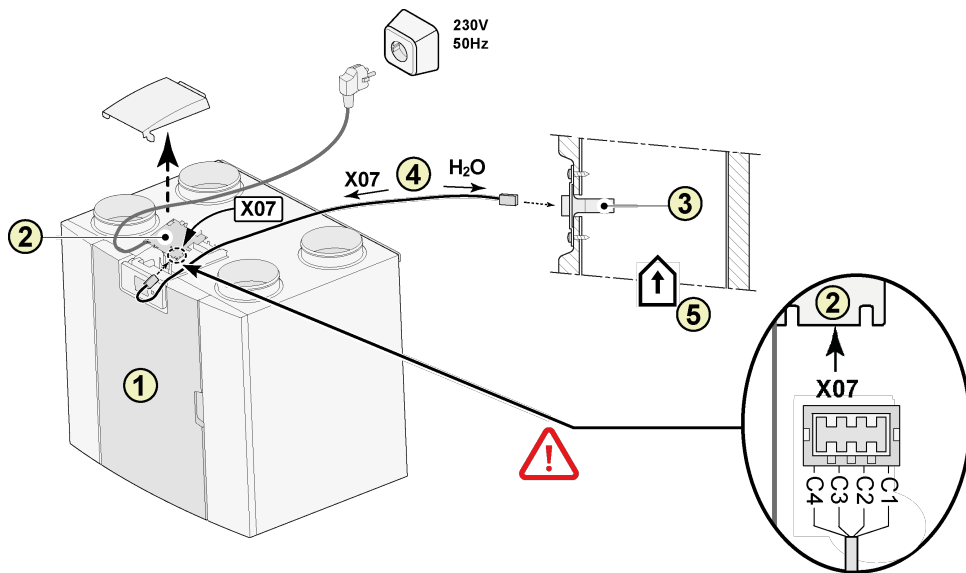
5D Renovent Sky 300



1. Sky 300 appliance
2. Control board
3. Humidity sensor (RH sensor)
4. Cable comes with humidity sensor. Cut out an opening in the available grommet for feeding through the sensor cable.
5. Duct "Extract air"

C1 = Brown
 C2 = White
 C3 = Green
 C4 = Yellow

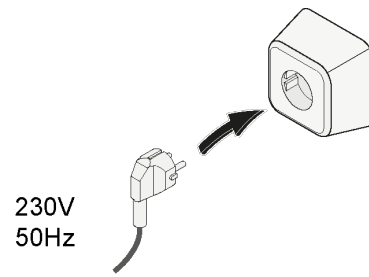
5E Flair HRV appliance



1. Flair HRV appliance (A Flair 325 is shown as an example)
2. Control board
3. Humidity sensor (RH sensor)
4. Cable comes with humidity sensor. Cut out an opening in the available grommet for feeding through the sensor cable.
5. Duct "Extract air"

C1 = Brown
 C2 = White
 C3 = Green
 C4 = Yellow

6



2 Setting humidity sensor (RH sensor)

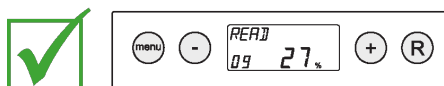
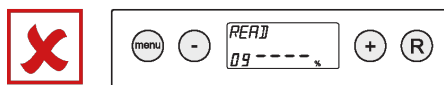
Renovent 180/ 300/400 Excellent

After installing the humidity sensor (RH sensor) it must be activated in the settings menu step number 30 to ON. Optionally, the sensitivity of the sensor can be altered by means of step number 31. Process for adjusting the value (s) in the settings menu of the Renovent Excellent, see § 6.3 of the installation instructions.

Step no.	Description	Factory setting	Adjusting range
30	Humidity sensor (RH sensor)	OFF	OFF = Humidity sensor (RH sensor) not active ON = Humidity sensor (RH sensor) active
31	Sensitivity	0	+2 = most sensitive 0 = default setting -2 = least sensitive

Check the operation of humidity sensor (RH sensor)

Select step number 9 in readout menu (See §6.4 of the installation instructions).



Sky 150/300 Excellent

After installing the humidity sensor (RH sensor) it must be activated in the settings menu step appliance control unit number 29 to ON. Optionally, the sensitivity of the sensor can be altered by means of step number 30. Process for adjusting the value (s) in the settings menu of the Renovent Sky, see § 6.5.3 of the installation instructions.

Step no.	Description	Factory setting	Adjusting range
29	Humidity sensor (RH sensor)	OFF	OFF = Humidity sensor (RH sensor) not active ON = Humidity sensor (RH sensor) active
30	Sensitivity	0	+2 = most sensitive 0 = default setting -2 = least sensitive

Check the operation of humidity sensor (RH sensor)

See RH value Information menu installer (See § 6.5.4 of the installation instructions).

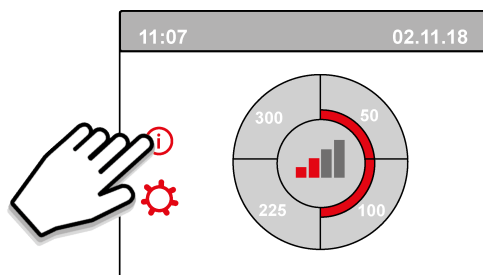
Flair HRV appliance

After installing the humidity sensor (RH sensor) it must be activated in the settings menu step number 7.1 to ON. Optionally, the sensitivity of the sensor can be altered by means of step number 7.2. Process for adjusting the value (s) in the settings menu of the HRV appliance, see the installation instructions.

Step no.	Description	Factory setting	Adjusting range
7.1	Humidity sensor (RH sensor)	OFF	OFF = Humidity sensor (RH sensor) not active ON = Humidity sensor (RH sensor) active
7.2	Sensitivity	0	+2 = most sensitive 0 = default setting -2 = least sensitive

Check the operation of humidity sensor (RH sensor)

Select  on touchscreen and go with  and  to readout value RH sensor.





Brink Climate Systems B.V.
P.O. Box 11, NL-7950AA Staphorst
T: +31 (0) 522 46 99 44
E: info@brinkclimatesystems.nl
www.brinkclimatesystems.nl